

Stainless Steel Cabinet Series

Tarrison Stainless Steel Cabinet Series is an ideal complement to the Front Line Servery. Cabinets are perfect for use as a Rear Line in your facility but have the flexibility to be used on the front line.

Choose from a combination of Flat Top, Flat Top with Drawers, Backsplash or Backsplash with Drawers – all with or without doors to fulfill your needs. Available in a wide range of lengths from 36" to 96" in 24" or 30" depth, these units can be banked together to create extended counter space with ample storage below.

To further customize your Cabinet needs, choose from a variety of optional components to maximize your functionality:

- Sink Bowls welded in place
- Single Overshelves
- Double Overshelves
- Hot or Cold Wells
- In-line refrigeration
- Kick Plates
- Sneeze Guards and much more



For more ideas visit
www.tarrison.com/photo-gallery

Wall Cabinets are also available to enhance your storage needs in lengths from 30" to 60". Likewise, Dish Cabinets are available in five convenient sizes – all 15" deep with open front. Use your imagination to create a Demonstration Center (see page 47 for examples) or any other function center to assist in making your facility the best it can be.



Stainless Steel Cabinet Series

Stainless Steel Cabinet Features



Heavy Duty Stainless Steel Drawers 11"x 16"x 6", with locks



Stainless Steel Adjustable Shelves, clips and under support



Cabinet tops are reinforced with Stainless Steel frame supports



Stainless Steel finished back and box style backplash



Stainless Steel Easy Clean Door Rail



Stainless Steel Door Wheels



Adjustable Stainless Steel Legs



Optional Stainless Steel Kick Plate

Bowl Size	Model No.
CENTRE DRAIN	
10"x14"x10"	SB-1014106
14"x14"x14"	SB-1414146
16"x20"x14"	SB-1620146
17"x24"x10"	SB-1724106
18"x18"x14"	SB-1818146
18"x24"x14"	SB-1824146
20"x20"x14"	SB-2020146
20"x24"x14"	SB-2024146
21"x18"x14"	SB-2118146
24"x24"x14"	SB-2424146
CORNER DRAIN (not shown)	
18"x18"x14"	SBC-181814
20"x20"x14"	SBC-202014
24"x24"x14"	SBC-242414



Optional Sinks, Factory Installed, fully welded, faucet extra

OTHER OPTIONS

- Modified Shelf
- Sliding Door Lock Hasp (padlock not included)
- Casters

A custom work-top surface can be added for continuous countertop applications

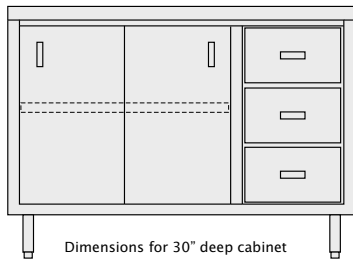


Add Refrigeration to your Cabinet Series line refer to pages 20-21

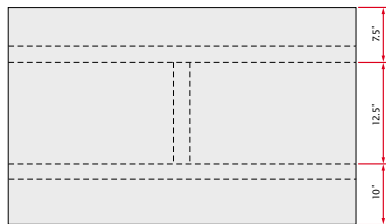
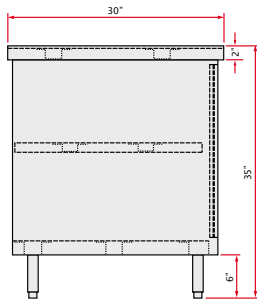
Stainless Steel Cabinet Series



Model C3048



Dimensions for 30" deep cabinet



Flat Top Cabinet

- All Heavy Duty Series Stainless Steel Construction
- Fully Welded and Assembled
- Reinforced Frame and H-Style Hat Channels
- Removable Sliding Stainless Steel Doors
- Adjustable Stainless Steel Intermediate Shelf
- Adjustable Stainless Steel heavy duty Leg Assembly
- Optional Drawers, (12x16.5x7") come complete with Locks
- Full extension drawer slides

Model No. with 2 sliding doors	Weight lbs.	Model No. with 2 doors & 3 drawers	Weight lbs.	Size D" x L" x H"
24" DEEP FLAT TOP CABINETS				
C2436	120	C2436D	130	24 x 36 x 35
C2442	130	C2442D	140	24 x 42 x 35
C2448	140	C2448D	150	24 x 48 x 35
C2460	165	C2460D	175	24 x 60 x 35
C2472	200	C2472D	210	24 x 72 x 35
C2484	230	C2484D	240	24 x 84 x 35
C2496	260	C2496D	270	24 x 96 x 35
30" DEEP FLAT TOP CABINETS				
C3036	130	C3036D	140	30 x 36 x 35
C3042	145	C3042D	155	30 x 42 x 35
C3048	160	C3048D	170	30 x 48 x 35
C3060	190	C3060D	200	30 x 60 x 35
C3072	220	C3072D	210	30 x 72 x 35
C3084	250	C3084D	240	30 x 84 x 35
C3096	280	C3096D	270	30 x 96 x 35

Sizes nominal, specifications subject to change without notice.

All Drawer Cabinets

- Same features as Flat Top Cabinets above
- Three drawers as shown below
- 30"D holds 2 - 12x20 pans;
- 24"D holds 1 full & 1 half long pan

NEW



C2424D 24" x 24" x 35" 105lbs.
C3024D 30" x 24" x 35" 115lbs.

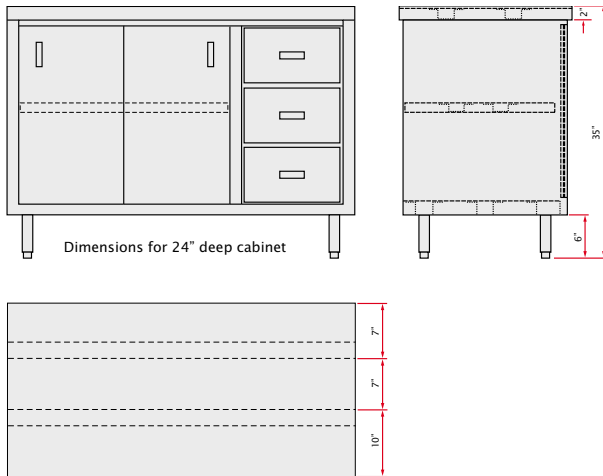


Model C3048D

Stainless Steel Cabinet Series



Model CO3048



Flat Top Open Cabinet

- All Heavy Duty Series Stainless Steel Construction
- Fully Welded and Assembled
- Reinforced Frame and H-Style Hat Channels
- Adjustable Stainless Steel Intermediate Shelf
- Adjustable Stainless Steel heavy duty Leg Assembly
- Optional Drawers come complete with Locks
- Full extension drawer slides

Model No. with open front	Weight lbs.	Model No. with open front & 3 drawers	Weight lbs.	Size D" x L" x H"
24" DEEP FLAT TOP CABINETS				
CO2436	110	CO2436D	120	24 x 36 x 35
CO2442	120	CO2442D	130	24 x 42 x 35
CO2448	130	CO2448D	140	24 x 48 x 35
CO2460	155	CO2460D	165	24 x 60 x 35
CO2472	190	CO2472D	200	24 x 72 x 35
CO2484	220	CO2484D	230	24 x 84 x 35
CO2496	250	CO2496D	260	24 x 96 x 35
30" DEEP FLAT TOP CABINETS				
CO3036	120	CO3036D	130	30 x 36 x 35
CO3042	135	CO3042D	145	30 x 42 x 35
CO3048	150	CO3048D	160	30 x 48 x 35
CO3060	180	CO3060D	190	30 x 60 x 35
CO3072	210	CO3072D	220	30 x 72 x 35
CO3084	240	CO3084D	250	30 x 84 x 35
CO3096	270	CO3096D	280	30 x 96 x 35

Sizes nominal, specifications subject to change without notice.

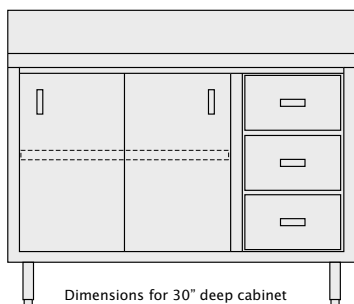


Model CO3048D

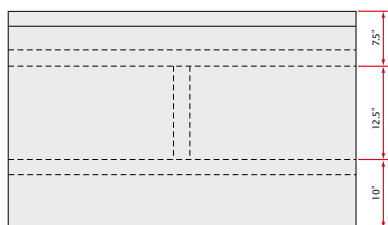
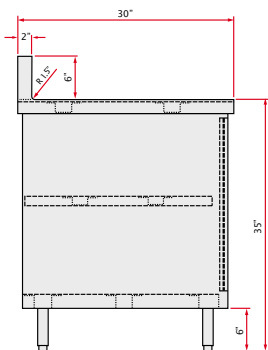
Stainless Steel Cabinet Series



Model No. C3048B



Dimensions for 30" deep cabinet



6" Backsplash Cabinet

- All Heavy Duty Series Stainless Steel Construction
- Fully Welded and Assembled
- Reinforced Frame and H-Style Hat Channels
- Removable Sliding Stainless Steel Doors
- Adjustable Stainless Steel Intermediate Shelf
- Adjustable Stainless Steel heavy duty Leg Assembly
- Optional Drawers come complete with Locks
- Full extension drawer slides

Model No. with 2 sliding doors	Weight lbs.	Model No. with 2 doors & 3 drawers	Weight lbs.	Size D" x L" x H"
24" DEEP CABINETS with 6" Backsplash				
C2436B	120	C2436BD	130	24 x 36 x 35/41
C2442B	135	C2442BD	145	24 x 42 x 35/41
C2448B	145	C2448BD	155	24 x 48 x 35/41
C2460B	175	C2460BD	185	24 x 60 x 35/41
C2472B	210	C2472BD	220	24 x 72 x 35/41
C2484B	240	C2484BD	250	24 x 84 x 35/41
C2496B	270	C2496BD	280	24 x 96 x 35/41
30" DEEP CABINETS with 6" Backsplash				
C3036B	140	C3036BD	150	30 x 36 x 35/41
C3042B	155	C3042BD	165	30 x 42 x 35/41
C3048B	170	C3048BD	180	30 x 48 x 35/41
C3060B	200	C3060BD	210	30 x 60 x 35/41
C3072B	230	C3072BD	240	30 x 72 x 35/41
C3084B	260	C3084BD	270	30 x 84 x 35/41
C3096B	290	C3096BD	300	30 x 96 x 35/41

Sizes nominal, specifications subject to change without notice.

All Drawer Cabinets

- Same features as 6" Backsplash Cabinets above
- Three drawers as shown below
- 30"D holds 2 - 12x20 pans;
- 24"D holds 1 full & 1 half long pan



C2424BD 24" x 24" x 35" 110lbs.
C3024BD 30" x 24" x 35" 125lbs.



Model No. C3048BD

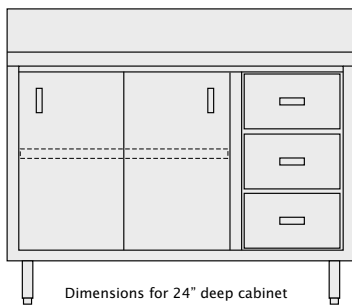
Stainless Steel Cabinet Series



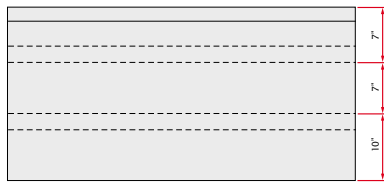
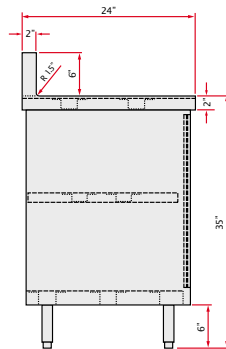
Model No. CO3048B

6" Backsplash Open Cabinet

- All Heavy Duty Series Stainless Steel Construction
- Fully Welded and Assembled
- Reinforced Frame and H-Style Hat Channels
- Adjustable Stainless Steel Intermediate Shelf
- Adjustable Stainless Steel heavy duty Leg Assembly
- Optional Drawers come complete with Locks
- Full extension drawer slides



Dimensions for 24" deep cabinet



Model No. with open front	Weight lbs.	Model No. with open front & 3 drawers	Weight lbs.	Size D" x L" x H"
24" DEEP CABINETS with 6" Backsplash				
CO2436B	120	CO2436BD	130	24 x 36 x 35/41
CO2442B	130	CO2442BD	140	24 x 42 x 35/41
CO2448B	140	CO2448BD	150	24 x 48 x 35/41
CO2460B	165	CO2460BD	175	24 x 60 x 35/41
CO2472B	200	CO2472BD	210	24 x 72 x 35/41
CO2484B	230	CO2484BD	240	24 x 84 x 35/41
CO2496B	260	CO2496BD	270	24 x 96 x 35/41
30" DEEP CABINETS with 6" Backsplash				
CO3036B	130	CO3036BD	140	30 x 36 x 35/41
CO3042B	145	CO3042BD	155	30 x 42 x 35/41
CO3048B	160	CO3048BD	170	30 x 48 x 35/41
CO3060B	190	CO3060BD	200	30 x 60 x 35/41
CO3072B	220	CO3072BD	230	30 x 72 x 35/41
CO3084B	250	CO3084BD	260	30 x 84 x 35/41
CO3096B	280	CO3096BD	290	30 x 96 x 35/41

Sizes nominal, specifications subject to change without notice.



6"H x 2"D box style radius backsplash



Optional Sinks, Factory Installed see price chart on page 41



Model No. CO3048BD

Stainless Steel Cabinet Series



Maximize your wall storage space with the Wall Cabinet

Stainless Steel Wall Cabinet

- All Heavy Duty Series Stainless Steel Construction
- Fully Welded and Assembled
- Removable Sliding Stainless Steel Doors
- Adjustable Stainless Steel Intermediate shelf



Model No. with 2 doors	Wt. lbs.	Model No. with open front	Wt. lbs.	Size D" x L" x H"	Extra Shelves	
					Model No.	Wt. lbs.
C1430W	70	CO1430W	60	14 x 30 x 32	CWS30	50
C1436W	80	CO1436W	70	14 x 36 x 32	CWS36	64
C1442W	85	CO1442W	75	14 x 42 x 32	CWS42	76
C1448W	90	CO1448W	80	14 x 48 x 32	CWS48	88
C1454W	100	CO1454W	90	14 x 54 x 32	CWS54	100
C1460W	105	CO1460W	95	14 x 60 x 32	CWS60	110

Sizes nominal, specifications subject to change without notice.

Stainless Steel Dish Cabinet

- All Heavy Duty Series Stainless Steel Construction
- Fully Welded and Assembled
- Adjustable Stainless Steel Intermediate shelf
- Adjustable Stainless Steel Heavy Duty Legs

Model No.	Weight lbs.	Size D" x L" x H"
DC1548	100	15 x 48 x 35
DC1560	120	15 x 60 x 35
DC1572	140	15 x 72 x 35
DC1584	160	15 x 84 x 35
DC1596	180	15 x 96 x 35



Stainless Steel Corner Cabinet

- All Heavy Duty Series Stainless Steel Construction
- Fully Welded and Assembled
- Adjustable Stainless Steel Intermediate shelf
- Adjustable Stainless Steel Heavy Duty Leg Assembly

Model No.	Weight lbs.	Size D" x L" x H"
C2436CB	120	24 x 36 x 35
C2442CB	135	24 x 42 x 35
C3048CB	150	30 x 48 x 35

Stainless Steel Cabinet Series

Tarrison Cabinets and Servery units can be modified for use as Demonstration and Teaching Centers. Simply add the necessary options to suit your needs to complete a 'Demo' Center as shown below. Start with a standard Cabinet (as shown on pages 40 to 43) or a standard Servery Utility Unit (as shown on page 28). Refer to page 39 for Overshelf, Kick Plates and Sink Bowls; see Tarrison's Storage & Handling catalogue for all other other optional needs.



2 - 60" Cabinets shown Model C3060BD with optional sink bowls, faucet, overhead mirror, Induction Cooker, glass panels, front ledge and kick plates



For more ideas visit
www.tarrison.com/photo-gallery



Operator view of 8' Demonstration Center using Back Mount Refrigerator